

AEROPUERTO DE TENERIFE-SUR

L_n

Nivel sonoro (dB (A))

50-55	65-70
55-60	>70
60-65	

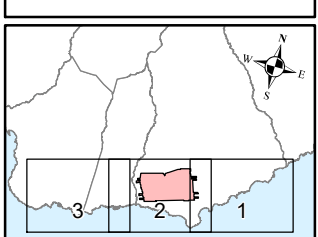
RANGO	Población (centenas)
50-55	-
55-60	-
60-65	-
65-70	-
>70	-

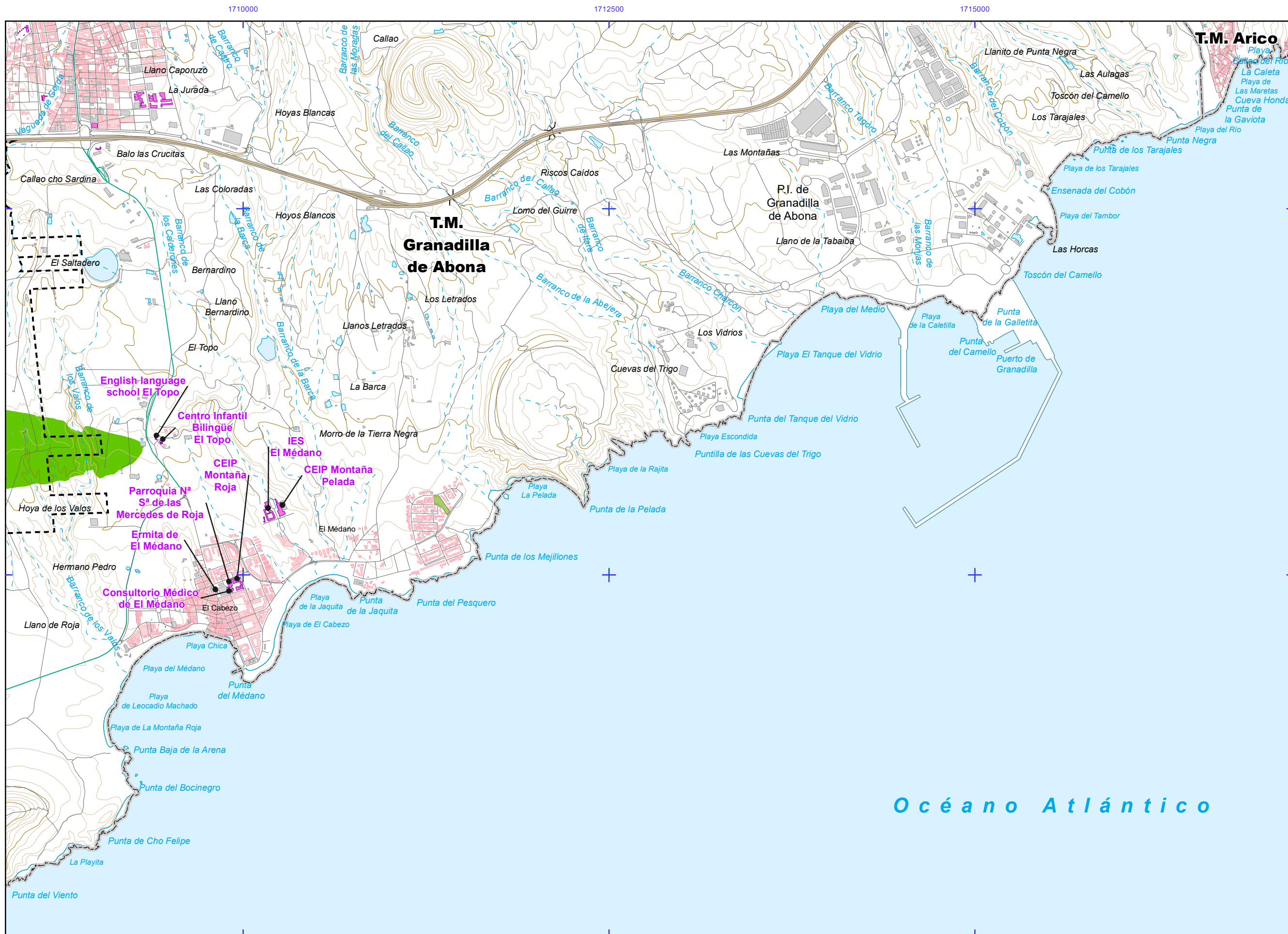
Otros elementos

- Infraestructura aeroportuaria
- - - Delimitación zona de servicio

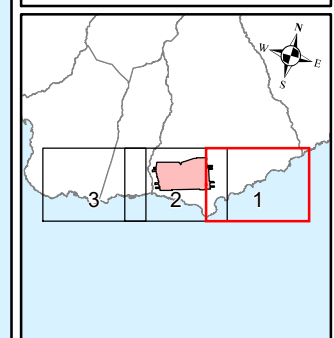
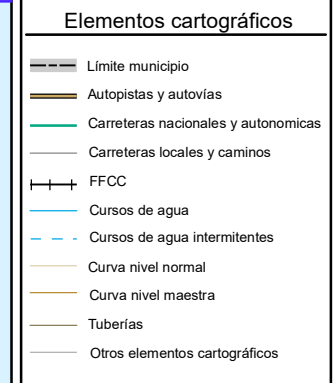
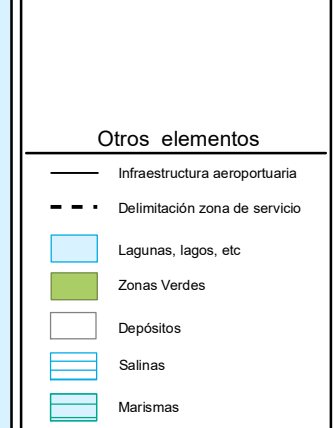
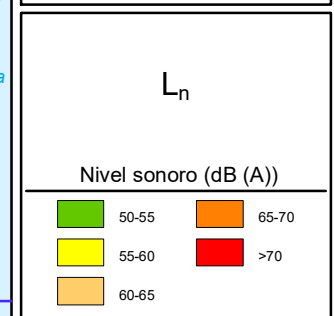
Elementos cartográficos

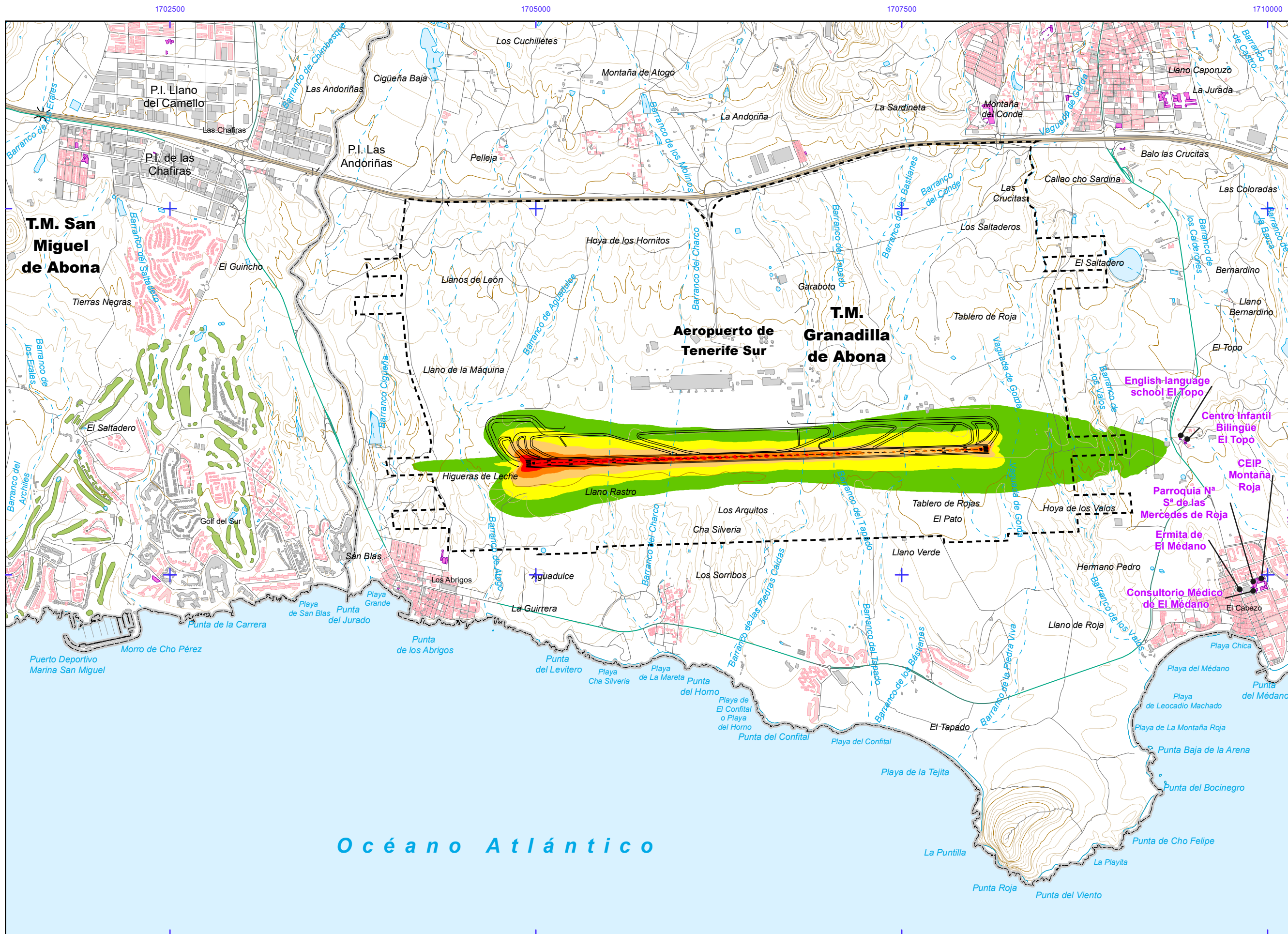
- - - Limite municipio





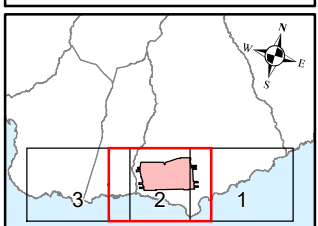
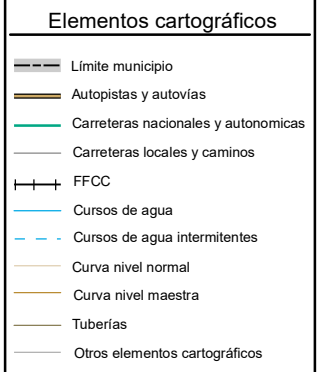
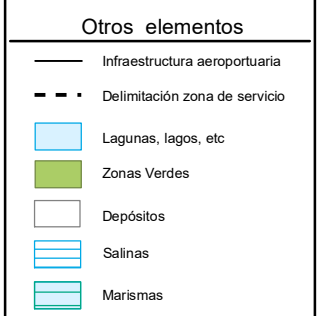
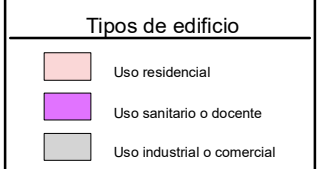
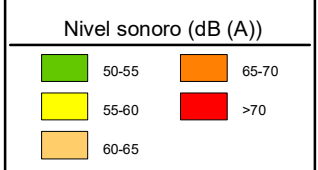
AEROPUERTO DE TENERIFE-SUR

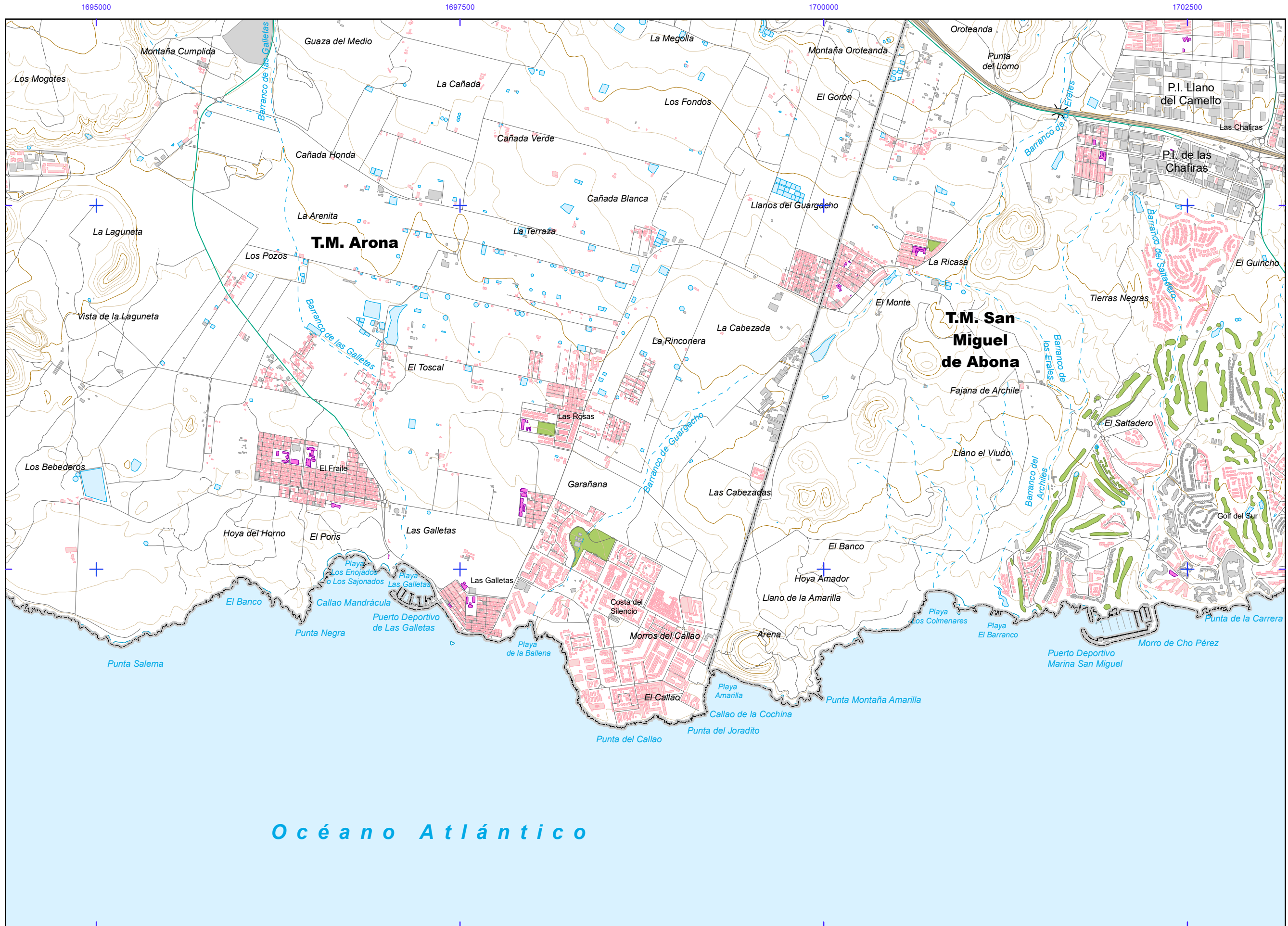




AEROPUERTO DE TENERIFE-SUR

L_n





AEROPUERTO DE TENERIFE-SUR

