

# Mapa Estratégico de Ruido

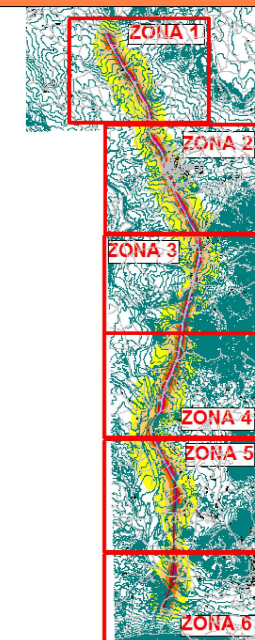
## DESCRIPCION DEL PLANO

Mapa de Nivel Sonoro  
Carretera RM-3  
Altura Mapa 4m

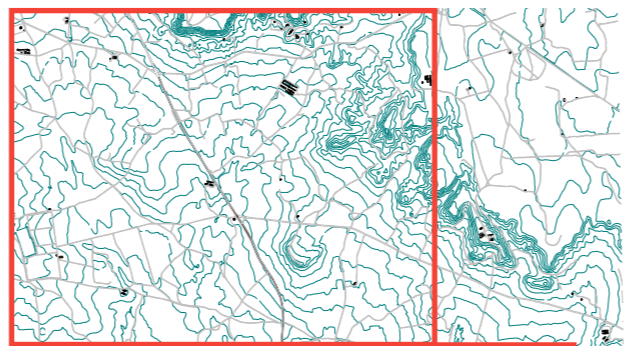
## LEYENDA DE OBJETOS

-  Carretera
-  Edif. Industrial
-  Edif. Residencial
-  Curvas Nivel
-  Evaluación Edif.

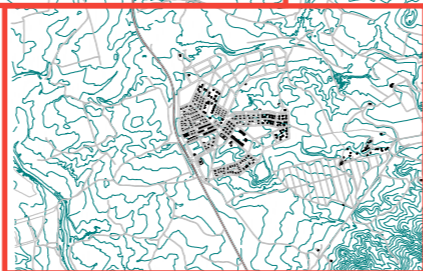
## CUADRÍCULA POSICIÓN



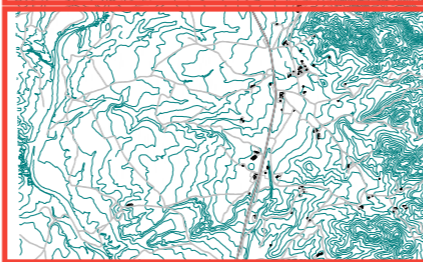
ZONA 1



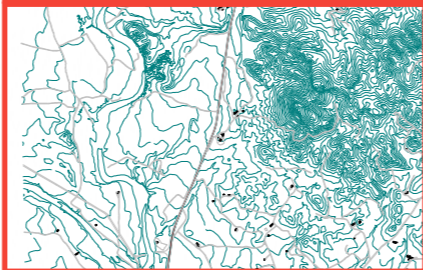
ZONA 2



ZONA 3



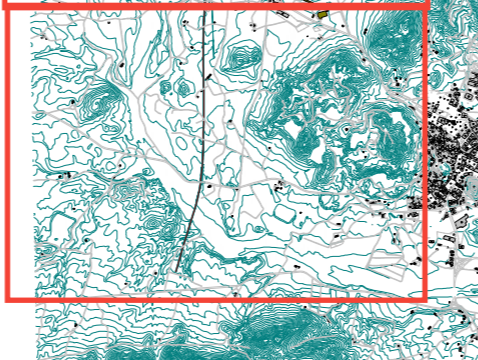
ZONA 4



ZONA 5



ZONA 6



# Mapa Estratégico de Ruido







## DESCRIPCION DEL PLANO

Mapa de Nivel Sonoro  
Carretera RM-3  
Periodo noche  
Ln(23:00-7:00)  
Zona - 1  
Altura Mapa 4m

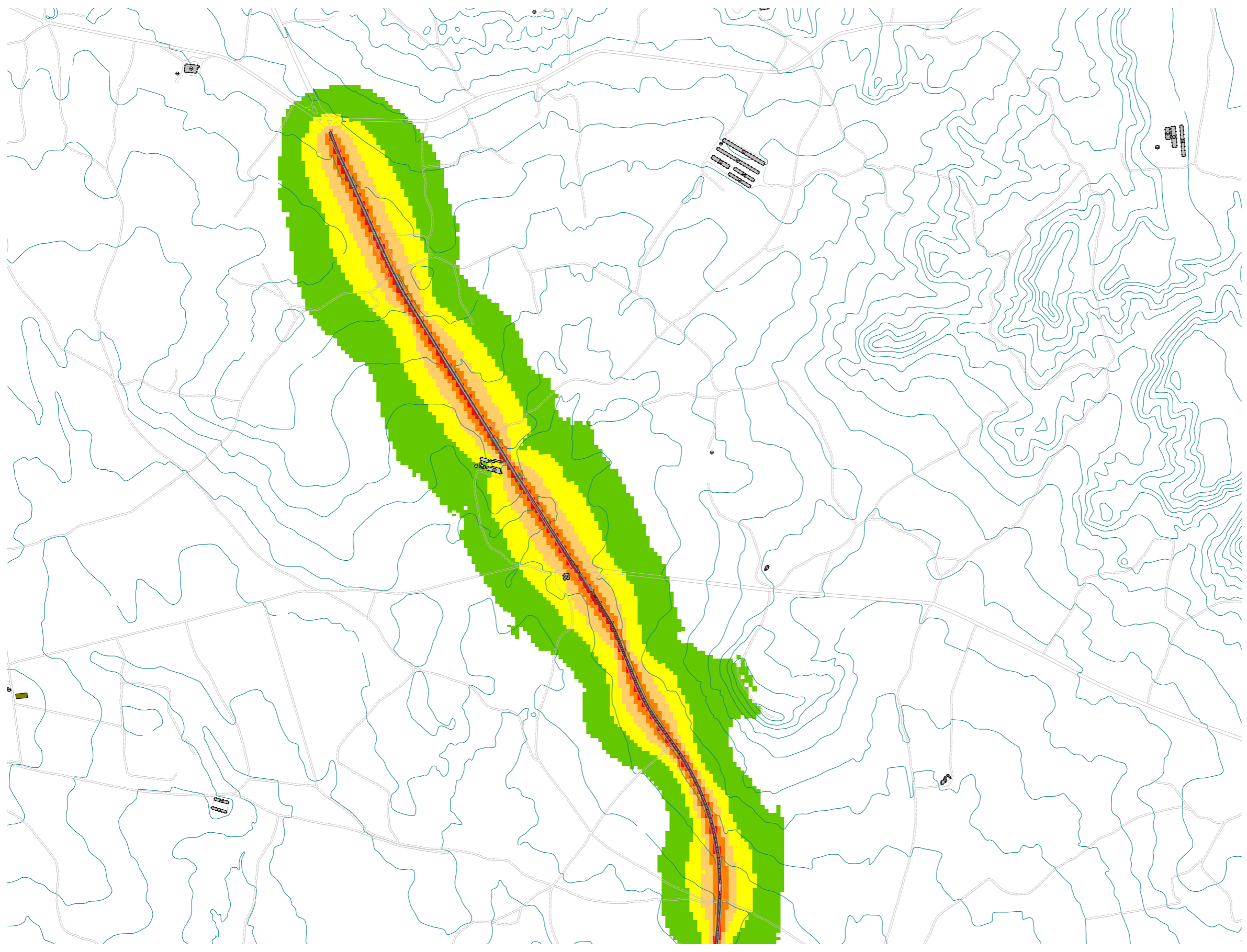
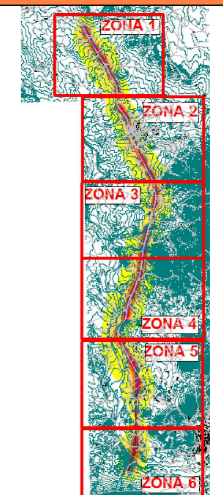
## LEYENDA DE OBJETOS

-  Carretera
-  Edif. Industrial
-  Edif. Residencial
-  Curvas Nivel
-  Evaluación Edif.

## NIVELES SONOROS

-  ... <= 50.0
-  50.0 < ... <= 55.0
-  55.0 < ... <= 60.0
-  60.0 < ... <= 65.0
-  65.0 < ... <= 70.0
-  70.0 < ...

## CUADRÍCULA POSICIÓN



# Mapa Estratégico de Ruido



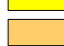



## DESCRIPCION DEL PLANO

Mapa de Nivel Sonoro  
Carretera RM-3  
Periodo noche  
Ln(23:00-7:00)  
Zona - 2  
Altura Mapa 4m

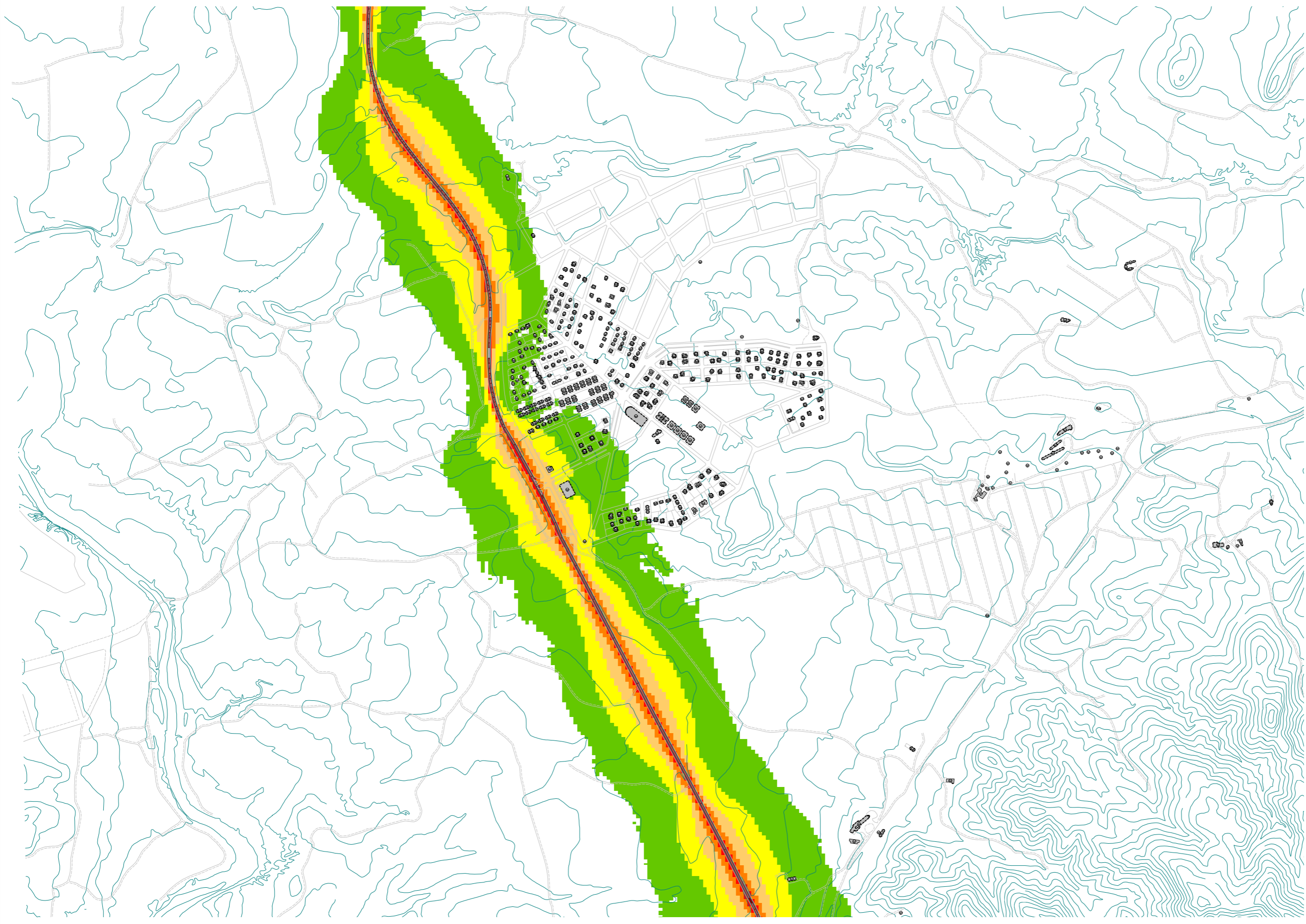
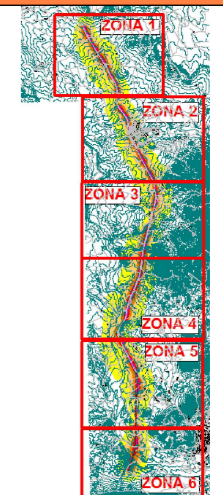
## LEYENDA DE OBJETOS

-  Carretera
-  Edif. Industrial
-  Edif. Residencial
-  Curvas Nivel
-  Evaluación Edif.

## NIVELES SONOROS

-  ... <= 50.0
-  50.0 < ... <= 55.0
-  55.0 < ... <= 60.0
-  60.0 < ... <= 65.0
-  65.0 < ... <= 70.0
-  70.0 < ...

## CUADRÍCULA POSICIÓN



# Mapa Estratégico de Ruido







## DESCRIPCION DEL PLANO

Mapa de Nivel Sonoro  
Carretera RM-3  
Periodo noche  
Ln(23:00-7:00)  
Zona - 3  
Altura Mapa 4m

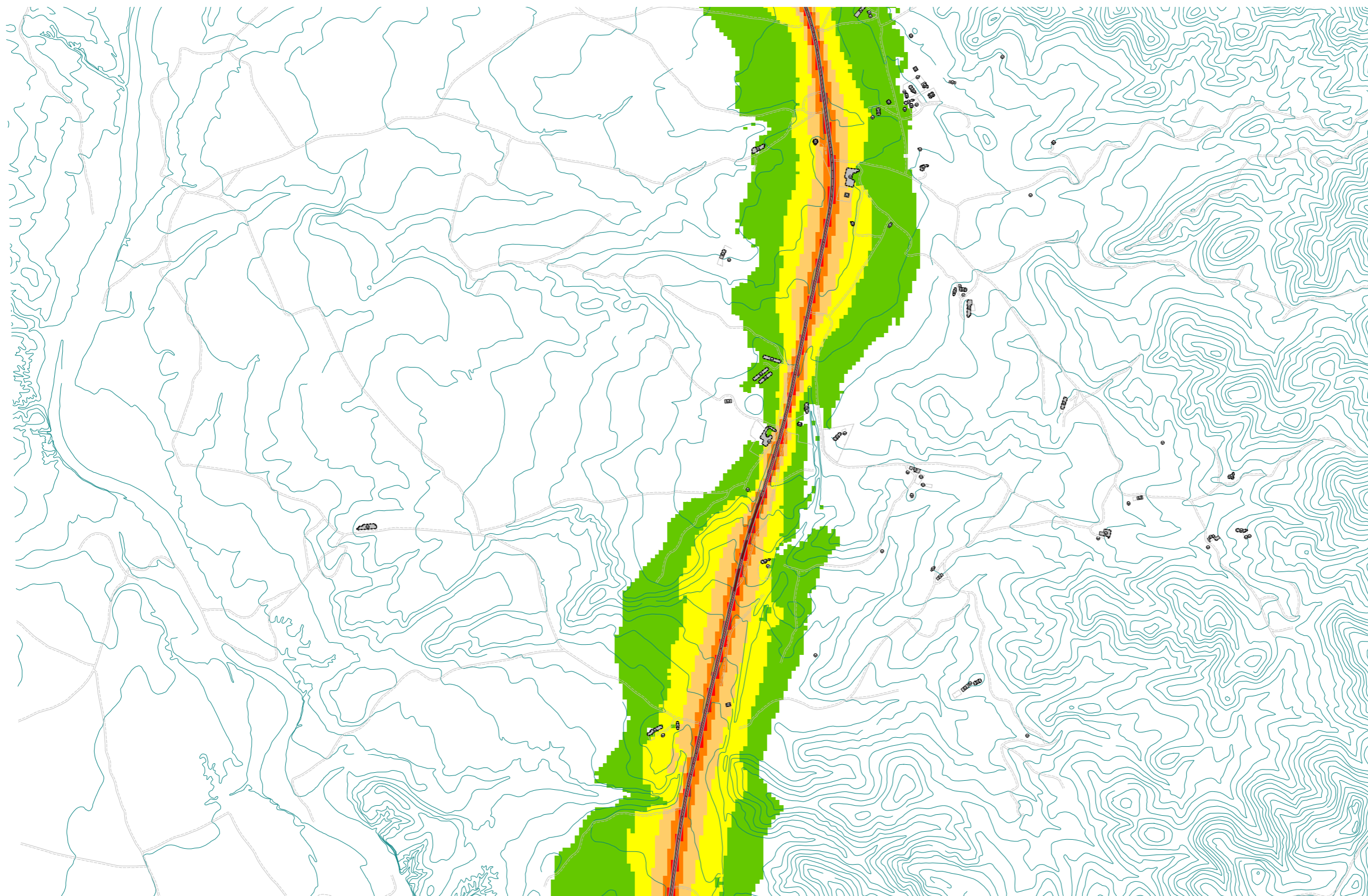
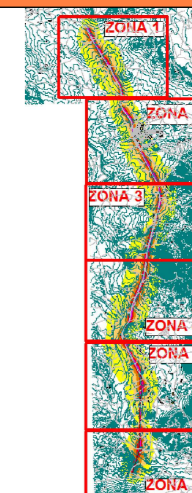
## LEYENDA DE OBJETOS

-  Carretera
-  Edif. Industrial
-  Edif. Residencial
-  Curvas Nivel
-  Evaluación Edif.

## NIVELES SONOROS

-  ... <= 50.0
-  50.0 < ... <= 55.0
-  55.0 < ... <= 60.0
-  60.0 < ... <= 65.0
-  65.0 < ... <= 70.0
-  70.0 < ...

## CUADRÍCULA POSICIÓN



# Mapa Estratégico de Ruido







## DESCRIPCION DEL PLANO

Mapa de Nivel Sonoro  
Carretera RM-3  
Periodo noche  
Ln(23:00-7:00)  
Zona - 4  
Altura Mapa 4m

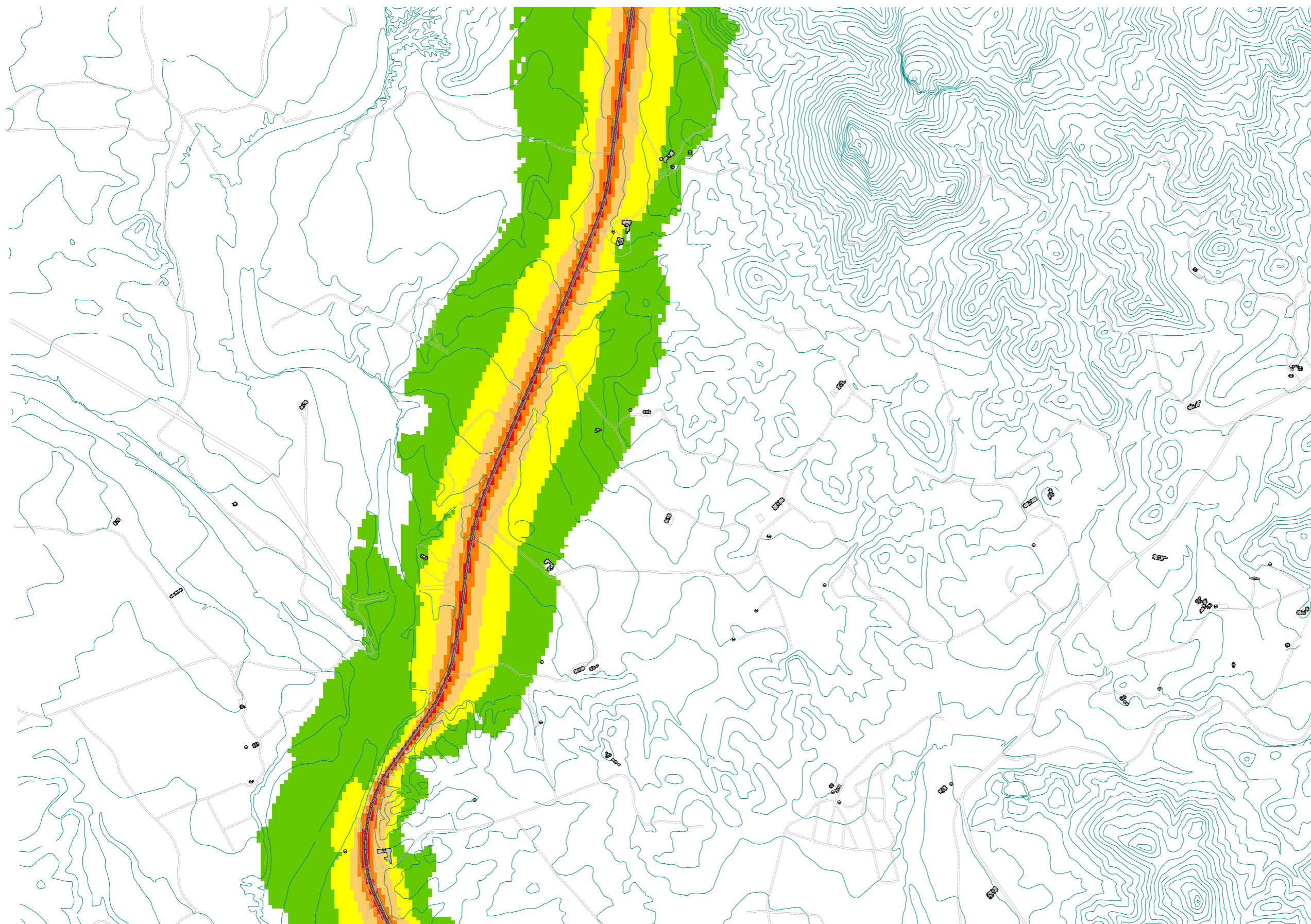
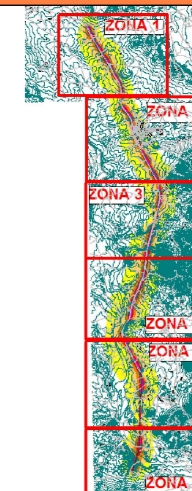
## LEYENDA DE OBJETOS

-  Carretera
-  Edif. Industrial
-  Edif. Residencial
-  Curvas Nivel
-  Evaluación Edif.

## NIVELES SONOROS

-  ... <= 50.0
-  50.0 < ... <= 55.0
-  55.0 < ... <= 60.0
-  60.0 < ... <= 65.0
-  65.0 < ... <= 70.0
-  70.0 < ...

## CUADRÍCULA POSICIÓN



# Mapa Estratégico de Ruido







## DESCRIPCION DEL PLANO

Mapa de Nivel Sonoro  
Carretera RM-3  
Periodo noche  
Ln(23:00-7:00)  
Zona - 5  
Altura Mapa 4m

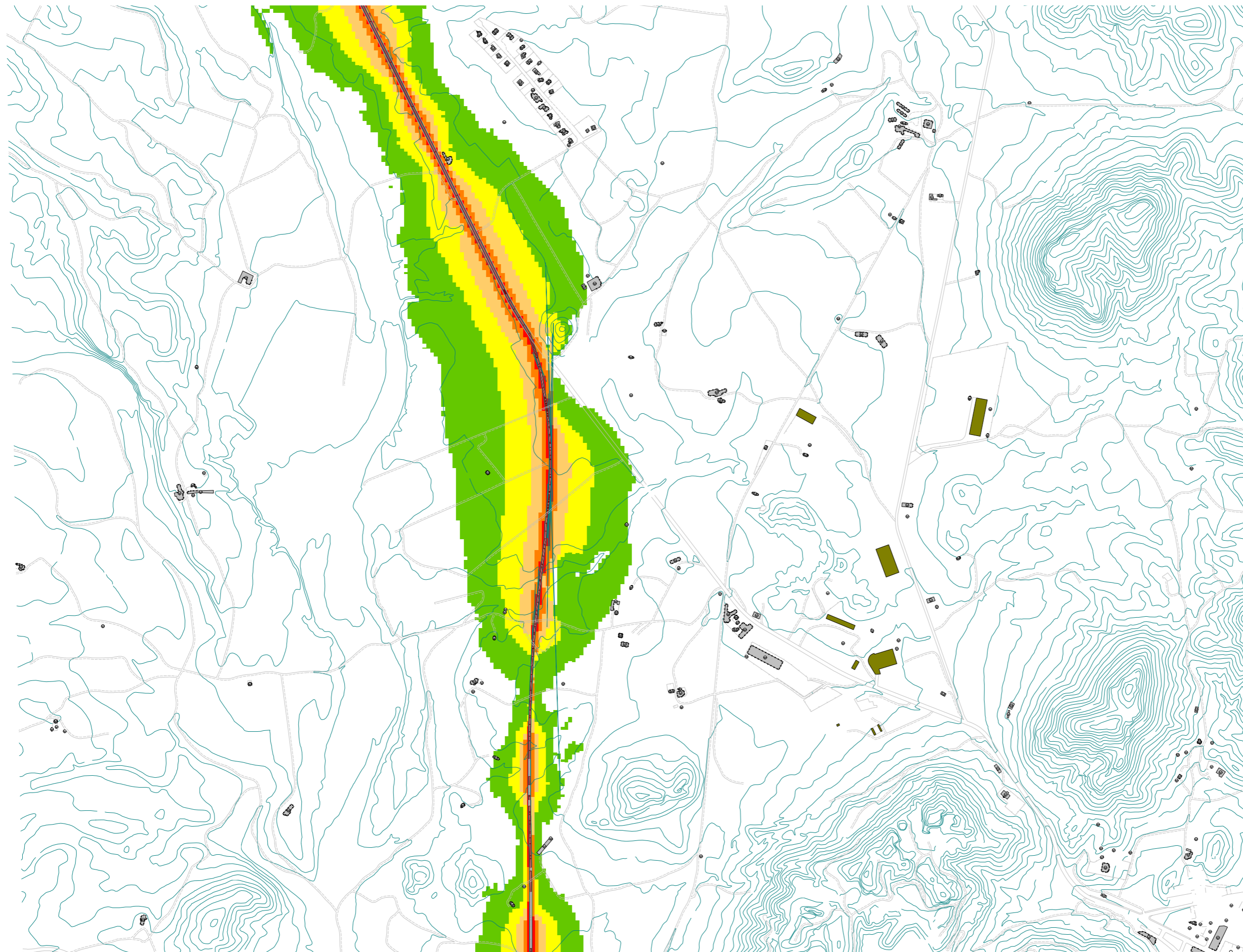
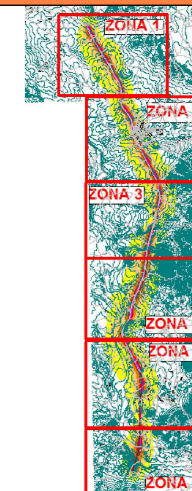
## LEYENDA DE OBJETOS

-  Carretera
-  Edif. Industrial
-  Edif. Residencial
-  Curvas Nivel
-  Evaluación Edif.

## NIVELES SONOROS

-  ...  $\leq 50.0$
-   $50.0 < \dots \leq 55.0$
-   $55.0 < \dots \leq 60.0$
-   $60.0 < \dots \leq 65.0$
-   $65.0 < \dots \leq 70.0$
-   $70.0 < \dots$

## CUADRÍCULA POSICIÓN



# Mapa Estratégico de Ruido



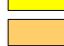



## DESCRIPCION DEL PLANO

Mapa de Nivel Sonoro  
Carretera RM-3  
Periodo noche  
Ln(23:00-7:00)  
Zona - 6  
Altura Mapa 4m

## LEYENDA DE OBJETOS

-  Carretera
-  Edif. Industrial
-  Edif. Residencial
-  Curvas Nivel
-  Evaluación Edif.

## NIVELES SONOROS

-  ... <= 50.0
-  50.0 < ... <= 55.0
-  55.0 < ... <= 60.0
-  60.0 < ... <= 65.0
-  65.0 < ... <= 70.0
-  70.0 < ...

## CUADRÍCULA POSICIÓN

