

# Mapa Estratégico de Ruido

## DESCRIPCION DEL PLANO

Mapa de Nivel Sonoro

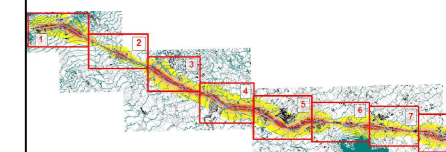
Carretera RM-19

Altura Mapa 4m

## LEYENDA DE OBJETOS

-  Carretera
-  Edif. Industrial
-  Edif. Residencial
-  Curvas Nivel
-  Evaluación Edif.

## CUADRÍCULA POSICIÓN



ZONA 1

ZONA 2

ZONA 3

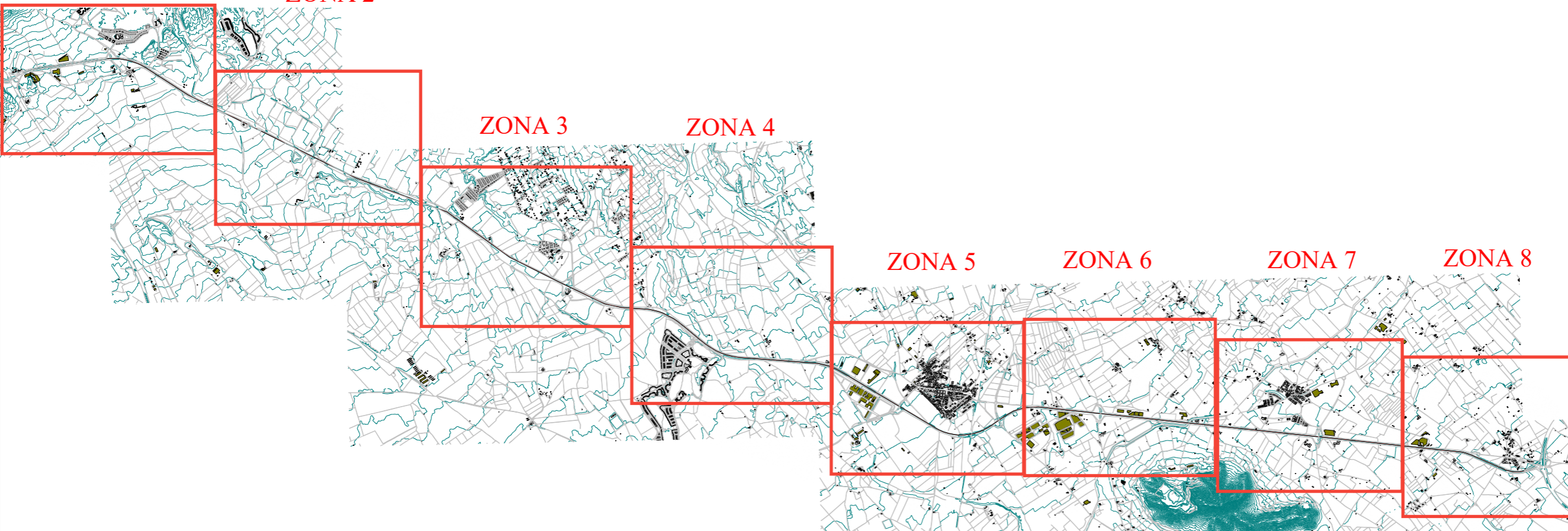
ZONA 4

ZONA 5

ZONA 6

ZONA 7

ZONA 8



# Mapa Estratégico de Ruido

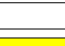





## DESCRIPCION DEL PLANO

Mapa de Nivel Sonoro  
Carretera RM-19  
Periodo tarde  
Le (19:00-23:00)  
Zona - 1  
Altura Mapa 4m

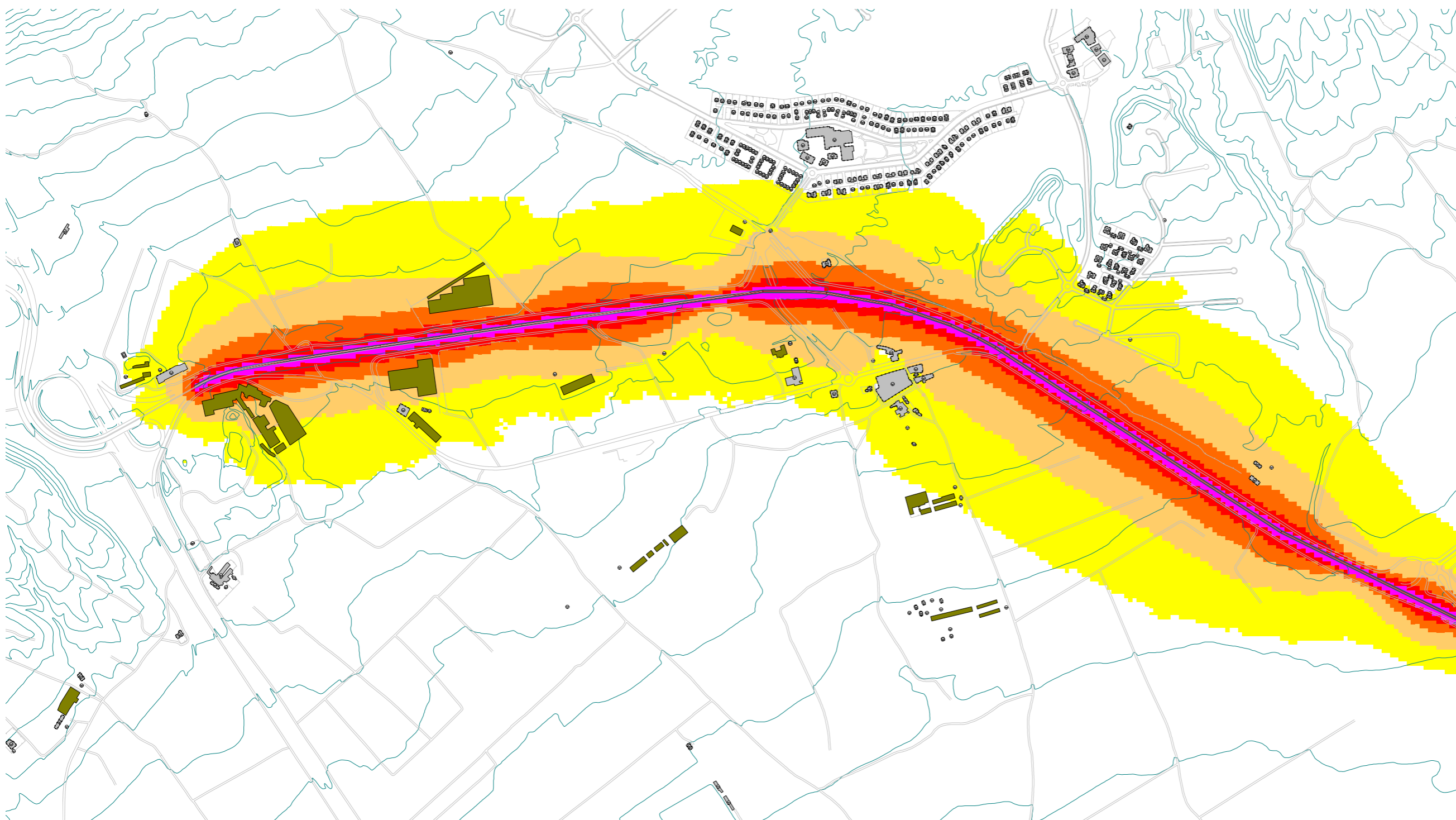
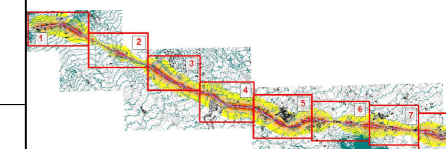
## LEYENDA DE OBJETOS

-  Carretera
-  Edif. Industrial
-  Edif. Residencial
-  Curvas Nivel
-  Evaluación Edif.

## NIVELES SONOROS

-  ... <= 55
-  55 < ... <= 60
-  60 < ... <= 65
-  65 < ... <= 70
-  70 < ... <= 75
-  75 < ...

## CUADRÍCULA POSICIÓN



**Región de Murcia**  
Consejería de  
presidencia y fomento

  
Fdo. Isaias García Salcedo

FECHA: octubre 2017  
C\_MUR\_30\_RM-19

ESCALA:  
1:10.000



TÍTULO DEL PROYECTO:  
Mapas Estratégicos de Ruido  
de las carreteras de la Comunidad Autónoma  
de la Región de Murcia

# Mapa Estratégico de Ruido







## DESCRIPCION DEL PLANO

Mapa de Nivel Sonoro  
Carretera RM-19  
Periodo tarde  
Le (19:00-23:00)  
Zona - 2  
Altura Mapa 4m

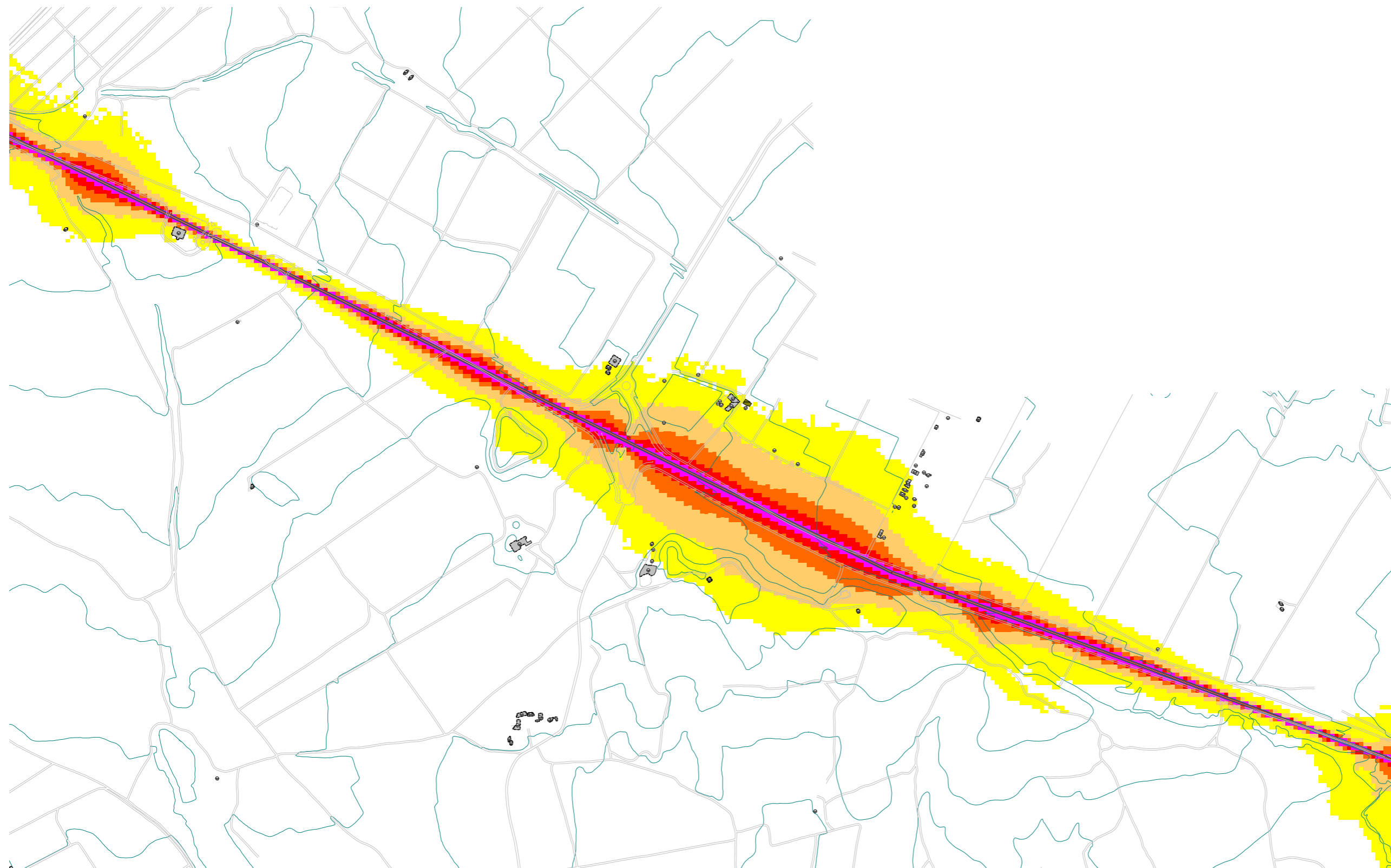
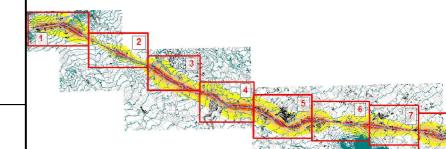
## LEYENDA DE OBJETOS

-  Carretera
-  Edif. Industrial
-  Edif. Residencial
-  Curvas Nivel
-  Evaluación Edif.

## NIVELES SONOROS

-  ... <= 55
-  55 < ... <= 60
-  60 < ... <= 65
-  65 < ... <= 70
-  70 < ... <= 75
-  75 < ...

## CUADRÍCULA POSICIÓN



# Mapa Estratégico de Ruido

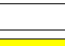





## DESCRIPCION DEL PLANO

Mapa de Nivel Sonoro  
Carretera RM-19  
Periodo tarde  
Le (19:00-23:00)  
Zona - 3  
Altura Mapa 4m

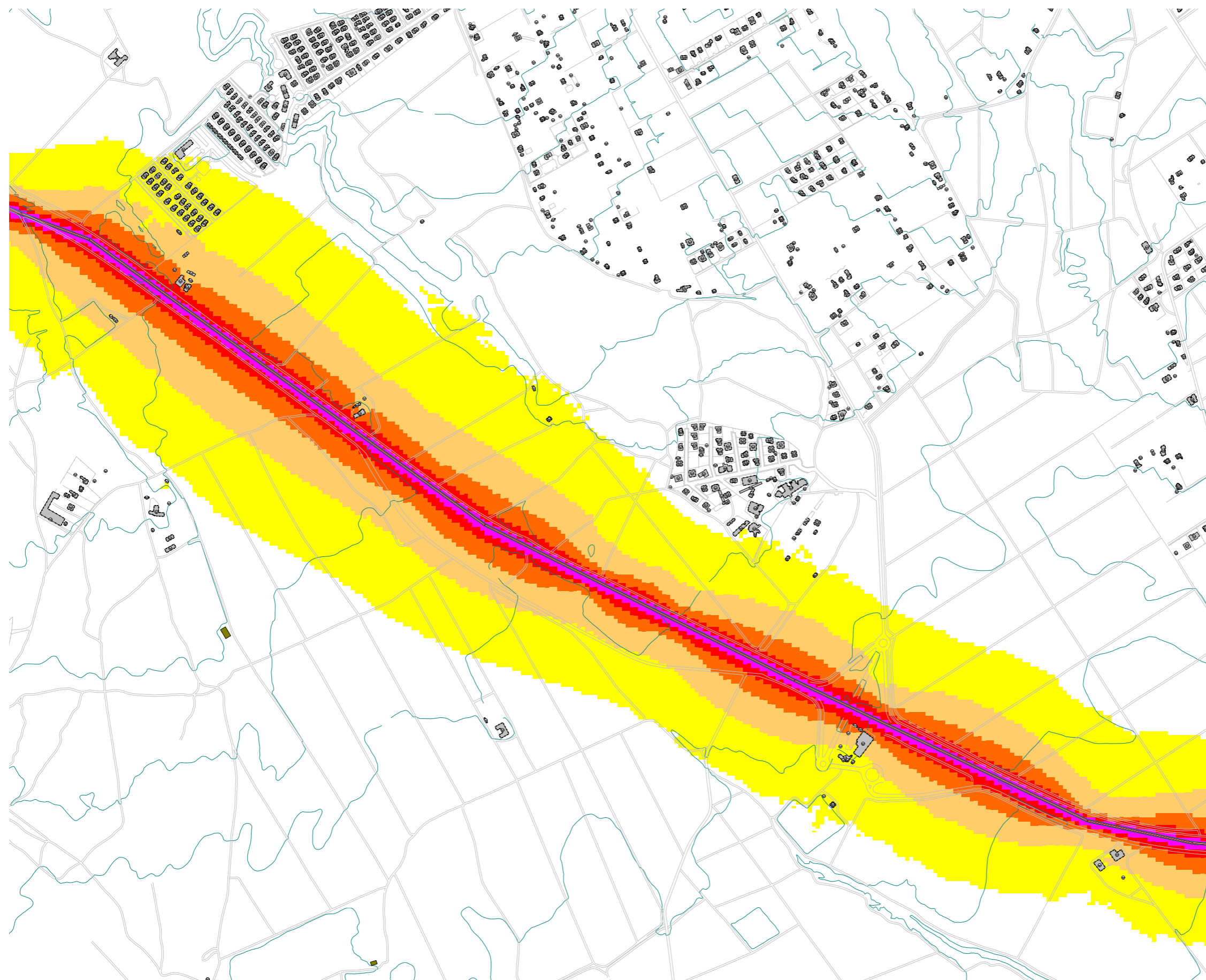
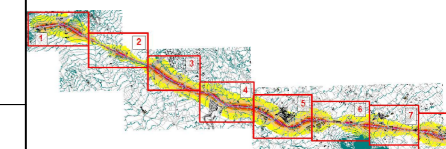
## LEYENDA DE OBJETOS

-  Carretera
-  Edif. Industrial
-  Edif. Residencial
-  Curvas Nivel
-  Evaluación Edif.

## NIVELES SONOROS

-  ... <= 55
-  55 < ... <= 60
-  60 < ... <= 65
-  65 < ... <= 70
-  70 < ... <= 75
-  75 < ...

## CUADRÍCULA POSICIÓN



# Mapa Estratégico de Ruido

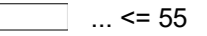
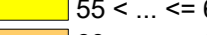
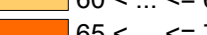
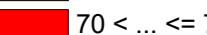
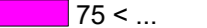

## DESCRIPCION DEL PLANO

Mapa de Nivel Sonoro  
Carretera RM-19  
Periodo tarde  
Le (19:00-23:00)  
Zona - 4  
Altura Mapa 4m

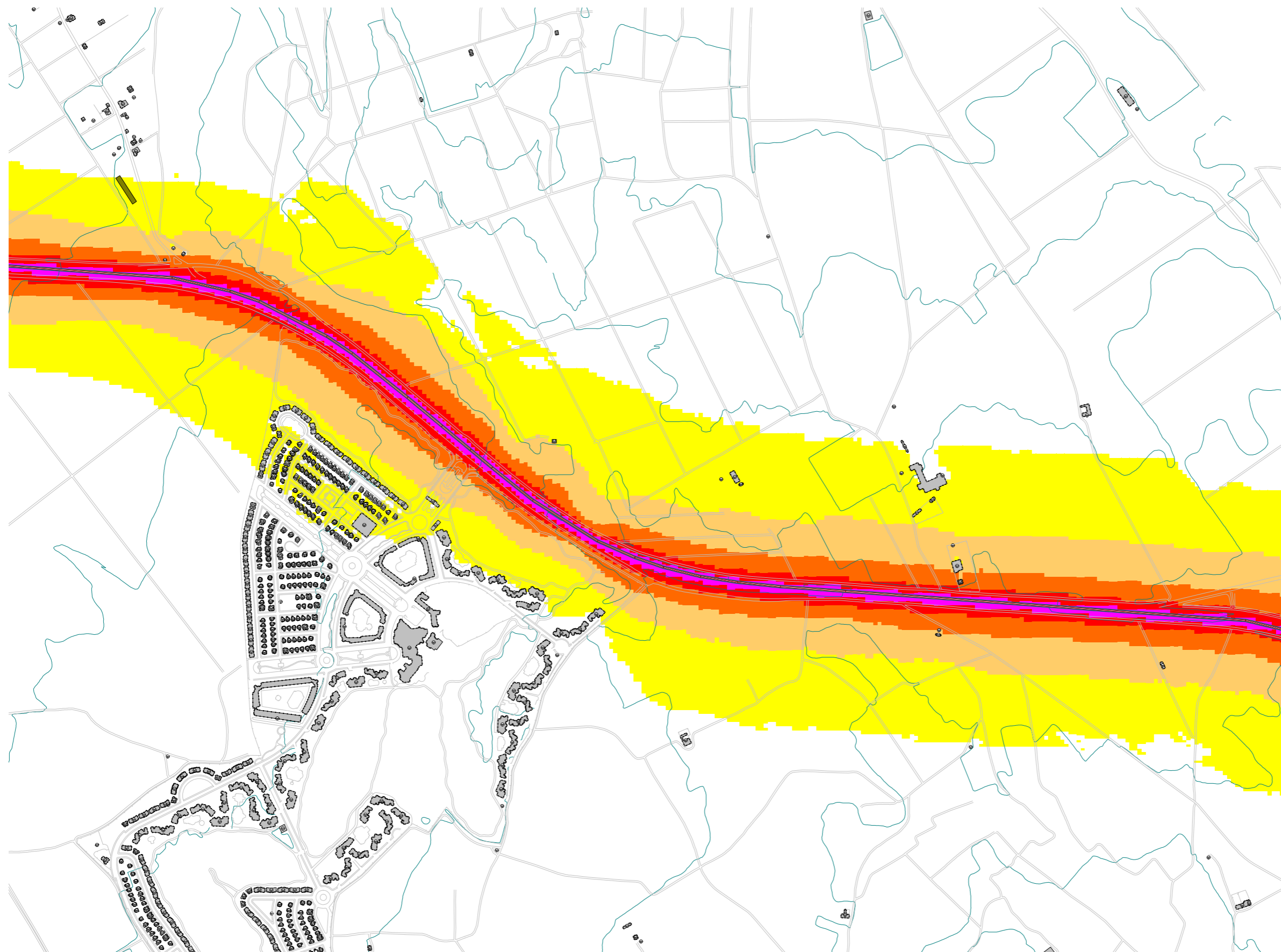
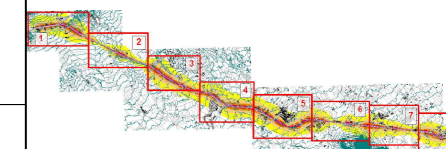
## LEYENDA DE OBJETOS

-  Carretera
-  Edif. Industrial
-  Edif. Residencial
-  Curvas Nivel
-  Evaluación Edif.

## NIVELES SONOROS

-  ... <= 55
-  55 < ... <= 60
-  60 < ... <= 65
-  65 < ... <= 70
-  70 < ... <= 75
-  75 < ...

## CUADRÍCULA POSICIÓN



# Mapa Estratégico de Ruido







## DESCRIPCION DEL PLANO

Mapa de Nivel Sonoro  
Carretera RM-19  
Periodo tarde  
Le (19:00-23:00)  
Zona - 5  
Altura Mapa 4m

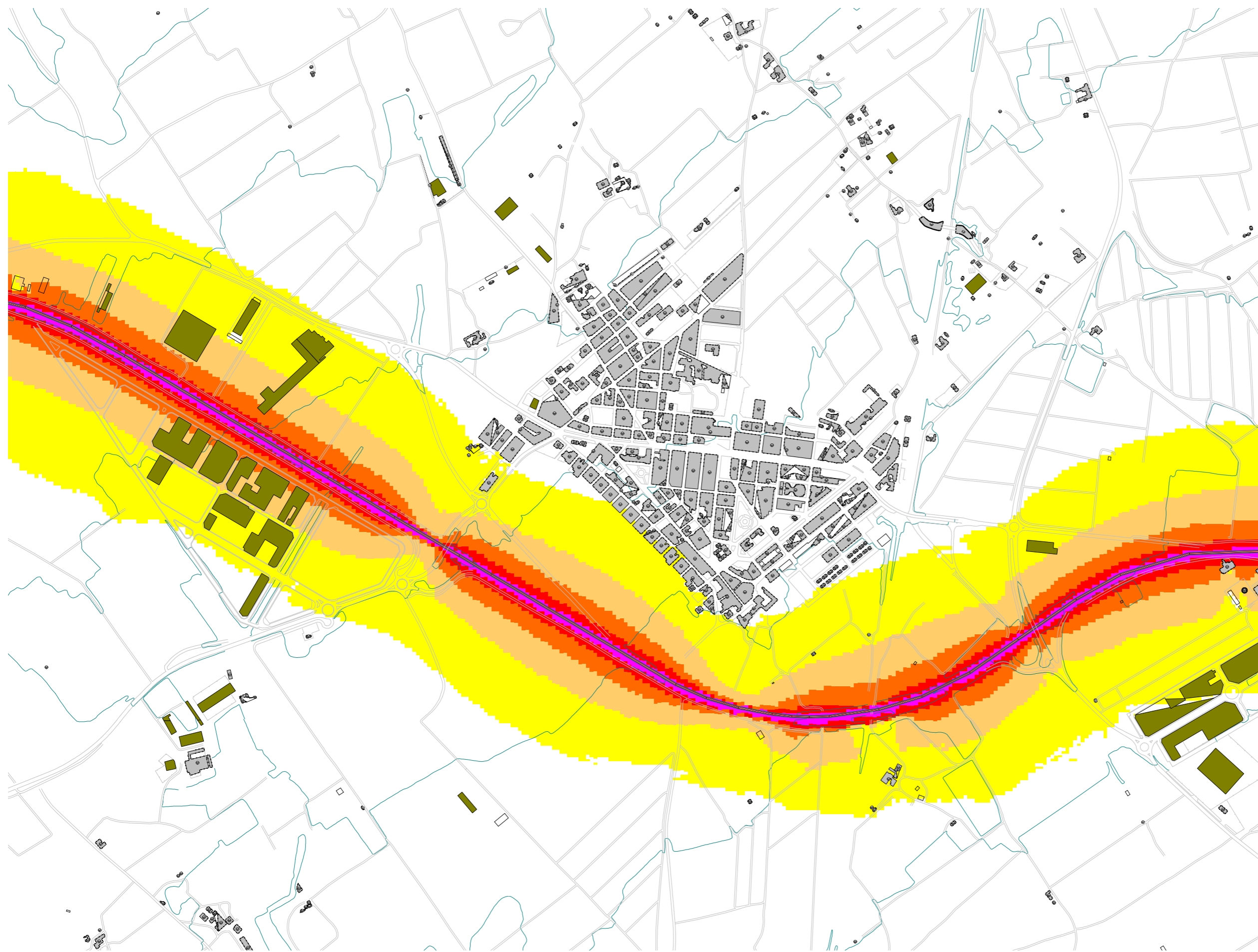
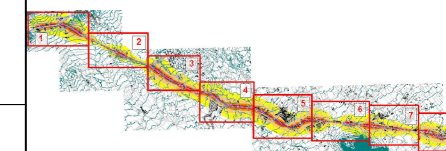
## LEYENDA DE OBJETOS

-  Carretera
-  Edif. Industrial
-  Edif. Residencial
-  Curvas Nivel
-  Evaluación Edif.

## NIVELES SONOROS

-  ... <= 55
-  55 < ... <= 60
-  60 < ... <= 65
-  65 < ... <= 70
-  70 < ... <= 75
-  75 < ...

## CUADRÍCULA POSICIÓN



# Mapa Estratégico de Ruido

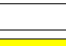





## DESCRIPCION DEL PLANO

Mapa de Nivel Sonoro  
Carretera RM-19  
Periodo tarde  
Le (19:00-23:00)  
Zona - 6  
Altura Mapa 4m

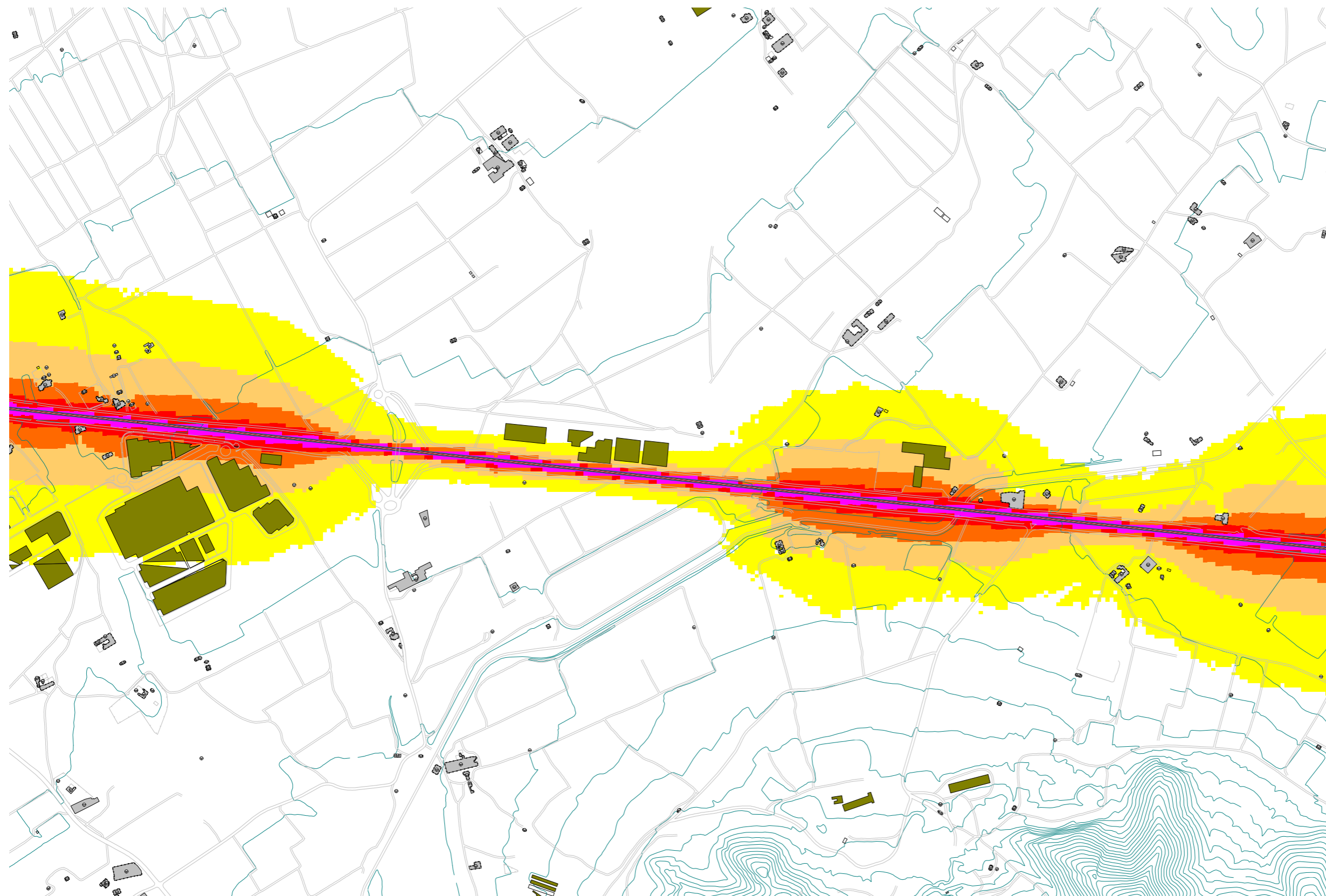
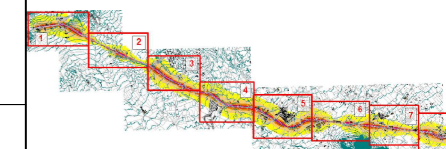
## LEYENDA DE OBJETOS

-  Carretera
-  Edif. Industrial
-  Edif. Residencial
-  Curvas Nivel
-  Evaluación Edif.

## NIVELES SONOROS

-  ... <= 55
-  55 < ... <= 60
-  60 < ... <= 65
-  65 < ... <= 70
-  70 < ... <= 75
-  75 < ...

## CUADRÍCULA POSICIÓN



# Mapa Estratégico de Ruido

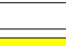





## DESCRIPCION DEL PLANO

Mapa de Nivel Sonoro  
Carretera RM-19  
Periodo tarde  
Le (19:00-23:00)  
Zona - 7  
Altura Mapa 4m

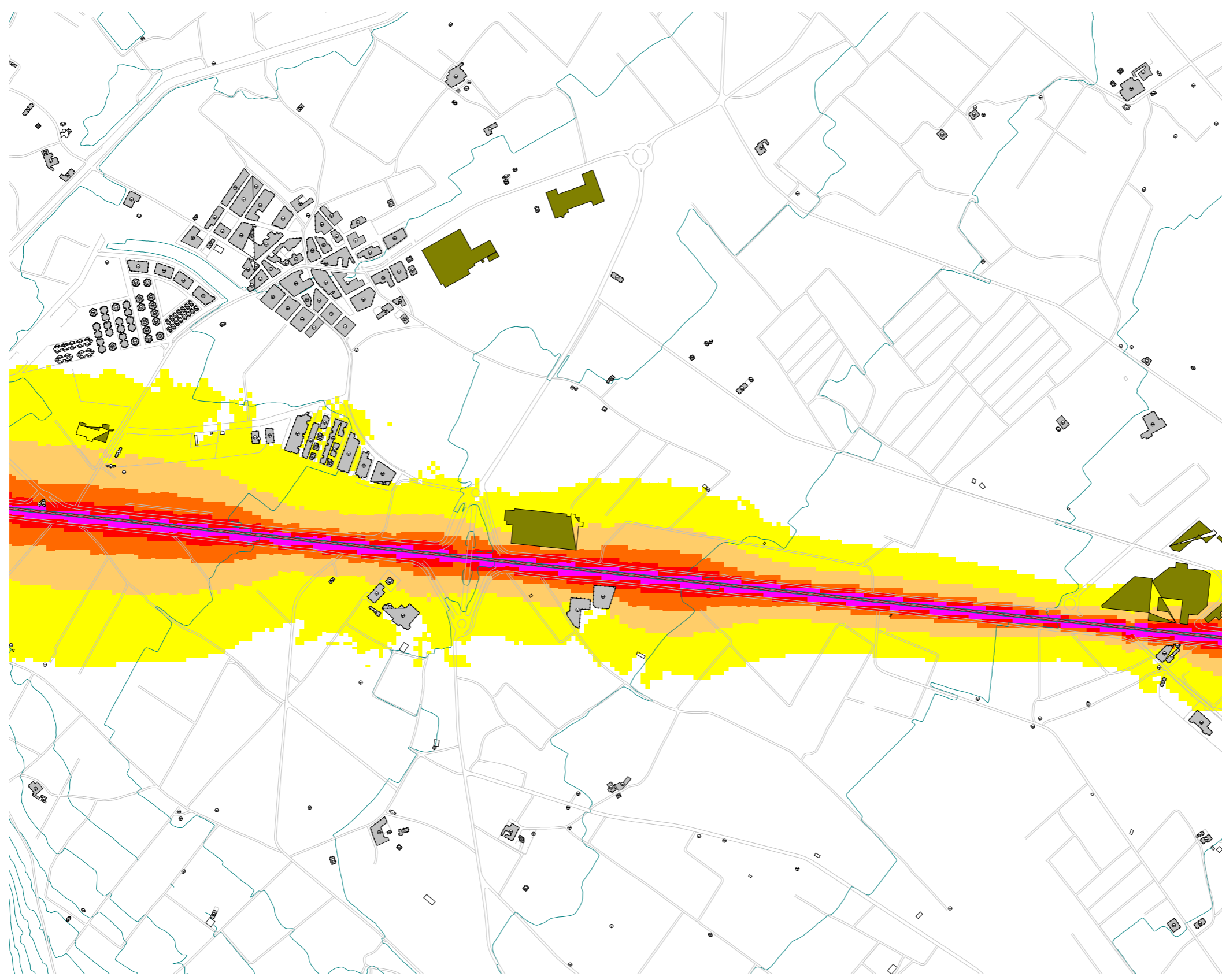
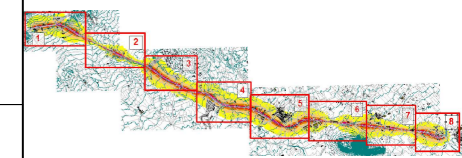
## LEYENDA DE OBJETOS

-  Carretera
-  Edif. Industrial
-  Edif. Residencial
-  Curvas Nivel
-  Evaluación Edif.

## NIVELES SONOROS

-  ... <= 55
-  55 < ... <= 60
-  60 < ... <= 65
-  65 < ... <= 70
-  70 < ... <= 75
-  75 < ...

## CUADRÍCULA POSICIÓN





# Mapa Estratégico de Ruido







## DESCRIPCION DEL PLANO

Mapa de Nivel Sonoro  
Carretera RM-19  
Periodo tarde  
Le (19:00-23:00)  
Zona - 8  
Altura Mapa 4m

## LEYENDA DE OBJETOS

-  Carretera
-  Edif. Industrial
-  Edif. Residencial
-  Curvas Nivel
-  Evaluación Edif.

## NIVELES SONOROS

-  ... <= 55
-  55 < ... <= 60
-  60 < ... <= 65
-  65 < ... <= 70
-  70 < ... <= 75
-  75 < ...

## CUADRÍCULA POSICIÓN

