

Mapa Estratégico de Ruido

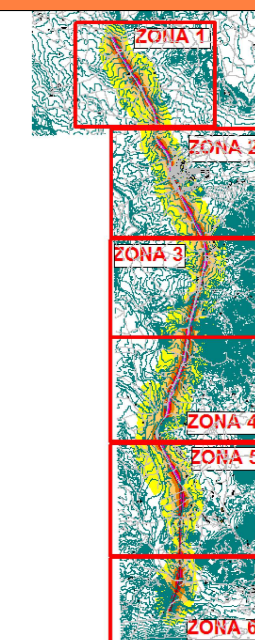
DESCRIPCION DEL PLANO

Mapa de Nivel Sonoro
Carretera RM-3
Altura Mapa 4m

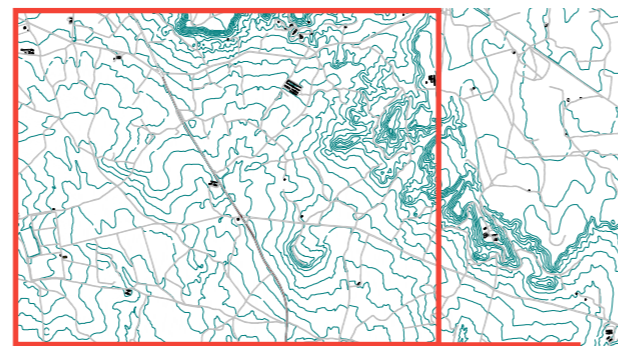
LEYENDA DE OBJETOS

-  Carretera
-  Edif. Industrial
-  Edif. Residencial
-  Curvas Nivel
-  Evaluación Edif.

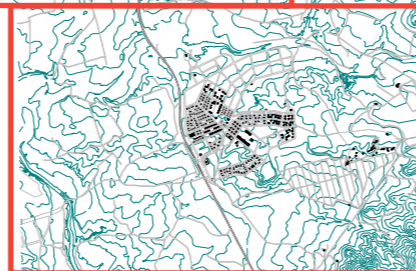
CUADRÍCULA POSICIÓN



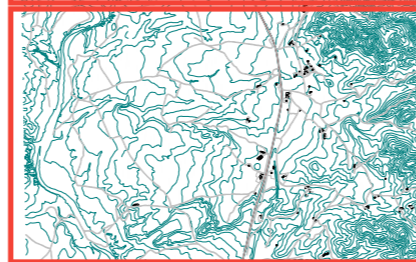
ZONA 1



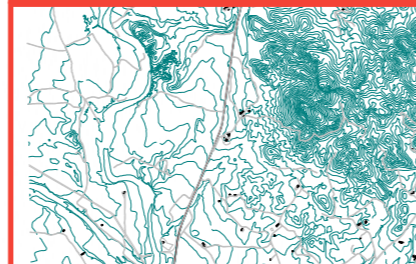
ZONA 2



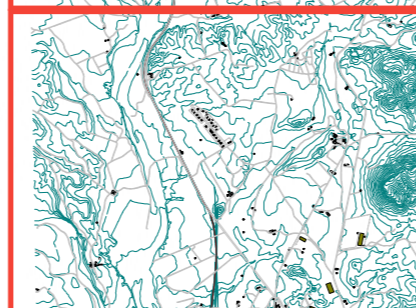
ZONA 3



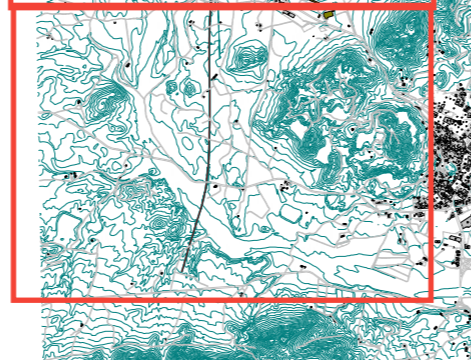
ZONA 4



ZONA 5



ZONA 6



Mapa Estratégico de Ruido


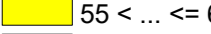
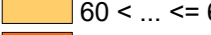
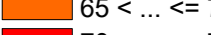
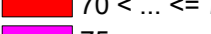
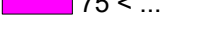
DESCRIPCION DEL PLANO

Mapa de Nivel Sonoro
Carretera RM-3
Periodo tarde
Le (19:00-23:00)
Zona - 1
Altura Mapa 4m

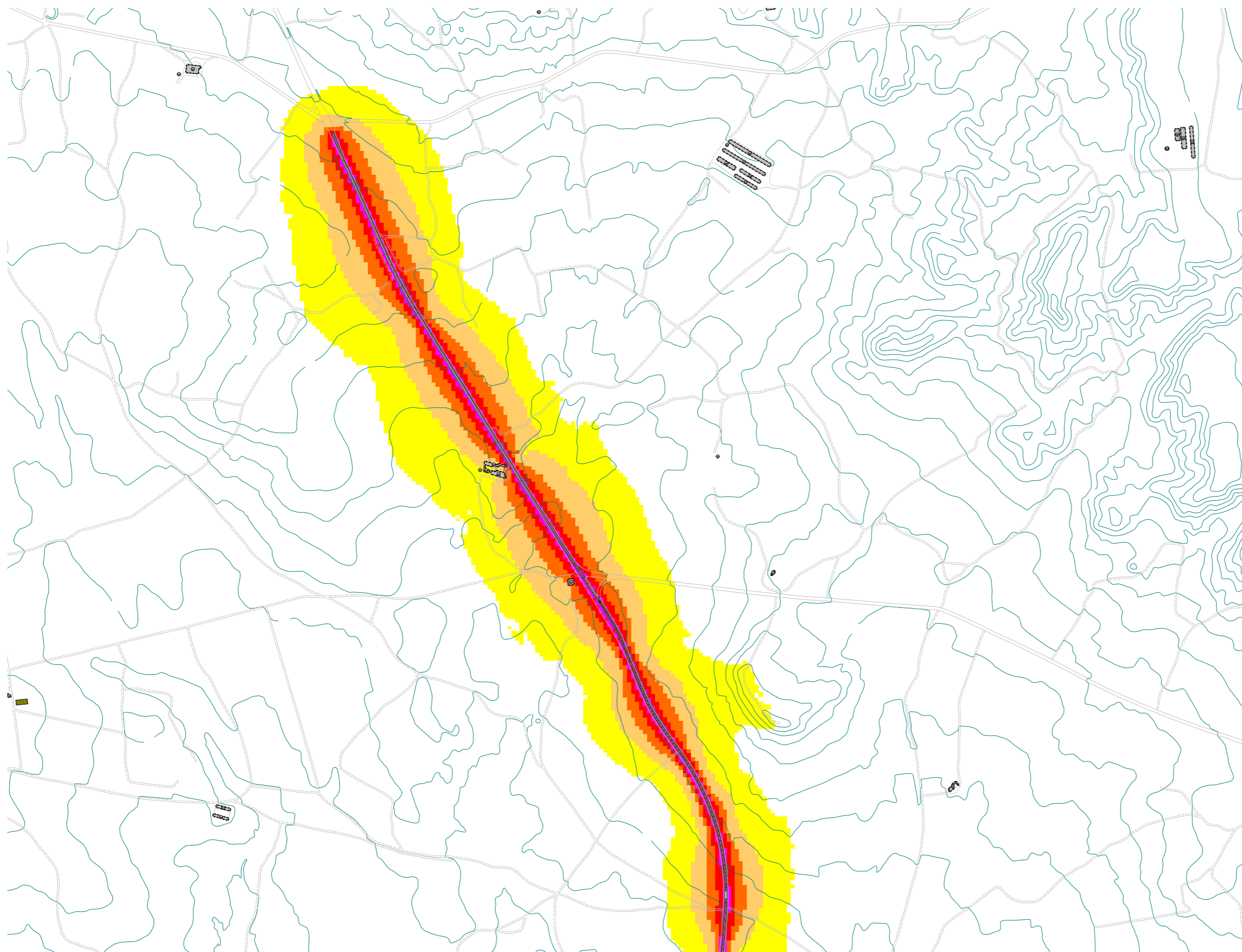
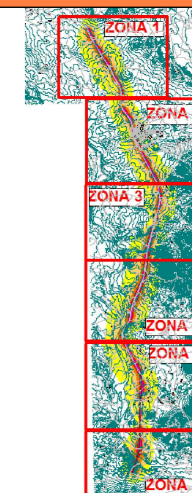
LEYENDA DE OBJETOS

-  Carretera
-  Edif. Industrial
-  Edif. Residencial
-  Curvas Nivel
-  Evaluación Edif.

NIVELES SONOROS

-  ... ≤ 55
-  $55 < \dots \leq 60$
-  $60 < \dots \leq 65$
-  $65 < \dots \leq 70$
-  $70 < \dots \leq 75$
-  $75 < \dots$

CUADRÍCULA POSICIÓN



Mapa Estratégico de Ruido


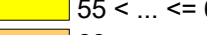
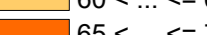
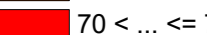
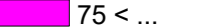

DESCRIPCION DEL PLANO

Mapa de Nivel Sonoro
Carretera RM-3
Periodo tarde
Le (19:00-23:00)
Zona - 4
Altura Mapa 4m

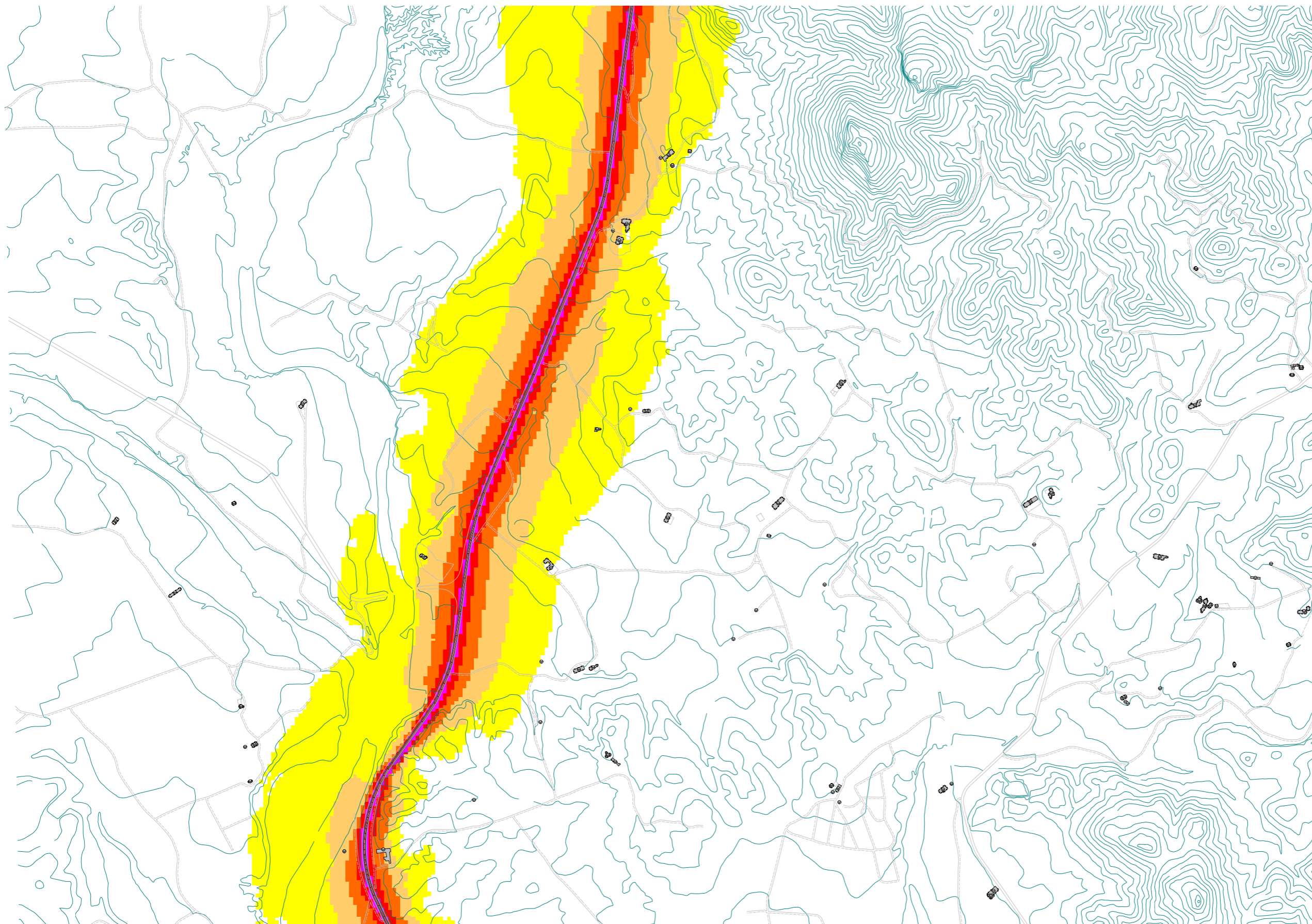
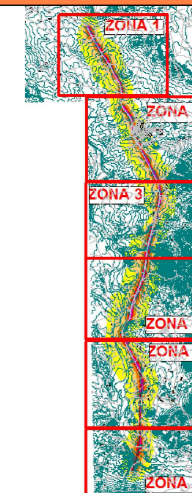
LEYENDA DE OBJETOS

-  Carretera
-  Edif. Industrial
-  Edif. Residencial
-  Curvas Nivel
-  Evaluación Edif.

NIVELES SONOROS

-  ... <= 55
-  55 < ... <= 60
-  60 < ... <= 65
-  65 < ... <= 70
-  70 < ... <= 75
-  75 < ...

CUADRÍCULA POSICIÓN





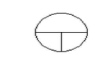


Mapa Estratégico de Ruido

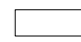





DESCRIPCION DEL PLANO

Mapa de Nivel Sonoro
Carretera RM-3
Periodo tarde
Le (19:00-23:00)
Zona - 2
Altura Mapa 4m

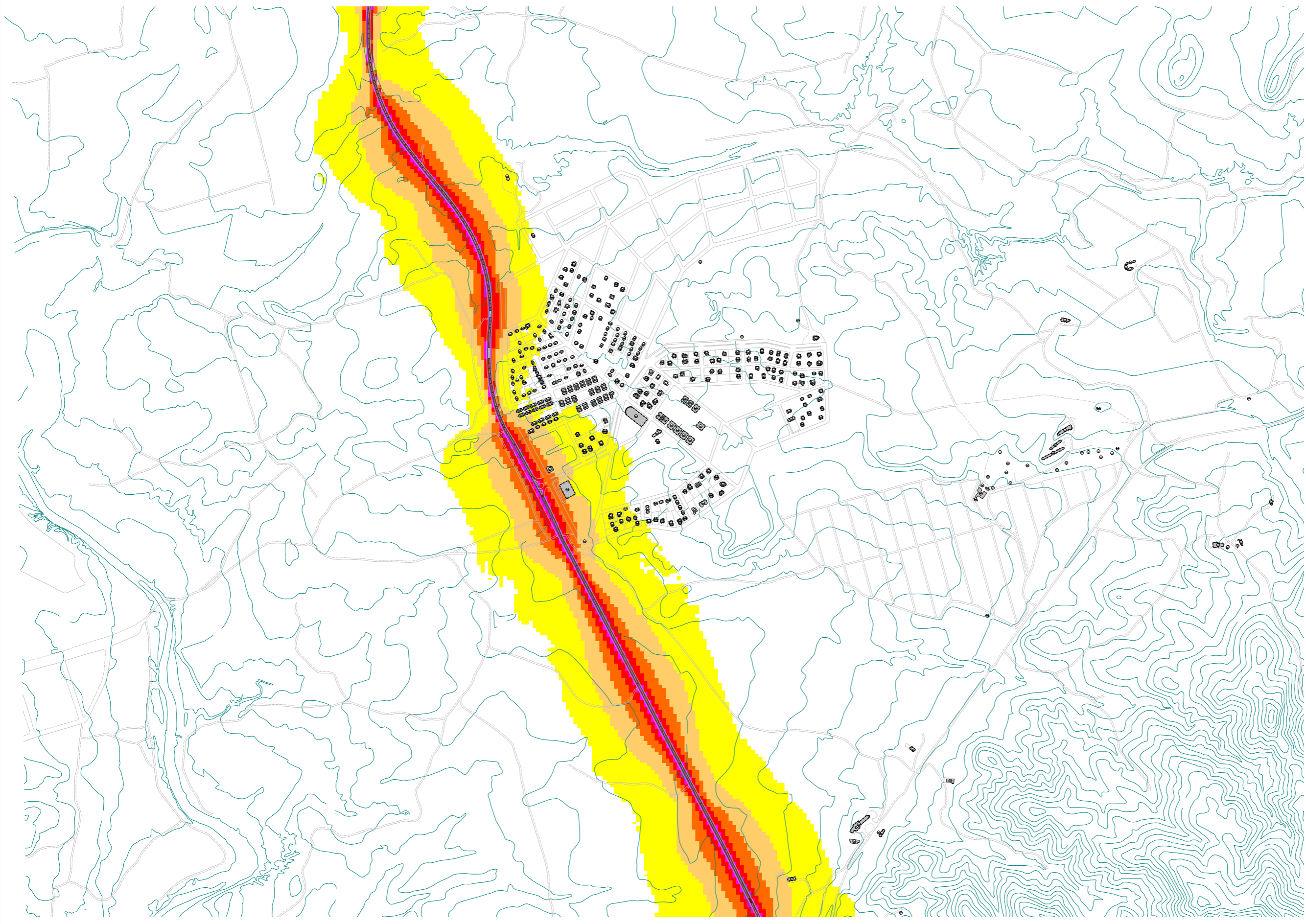
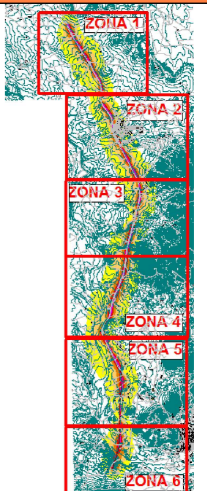
LEYENDA DE OBJETOS

-  Carretera
-  Edif. Industrial
-  Edif. Residencial
-  Curvas Nivel
-  Evaluación Edif.

NIVELES SONOROS

-  ... <= 55
-  55 < ... <= 60
-  60 < ... <= 65
-  65 < ... <= 70
-  70 < ... <= 75
-  75 < ...

CUADRÍCULA POSICIÓN



Mapa Estratégico de Ruido







DESCRIPCION DEL PLANO

Mapa de Nivel Sonoro
Carretera RM-3
Periodo tarde
Le (19:00-23:00)
Zona - 3
Altura Mapa 4m

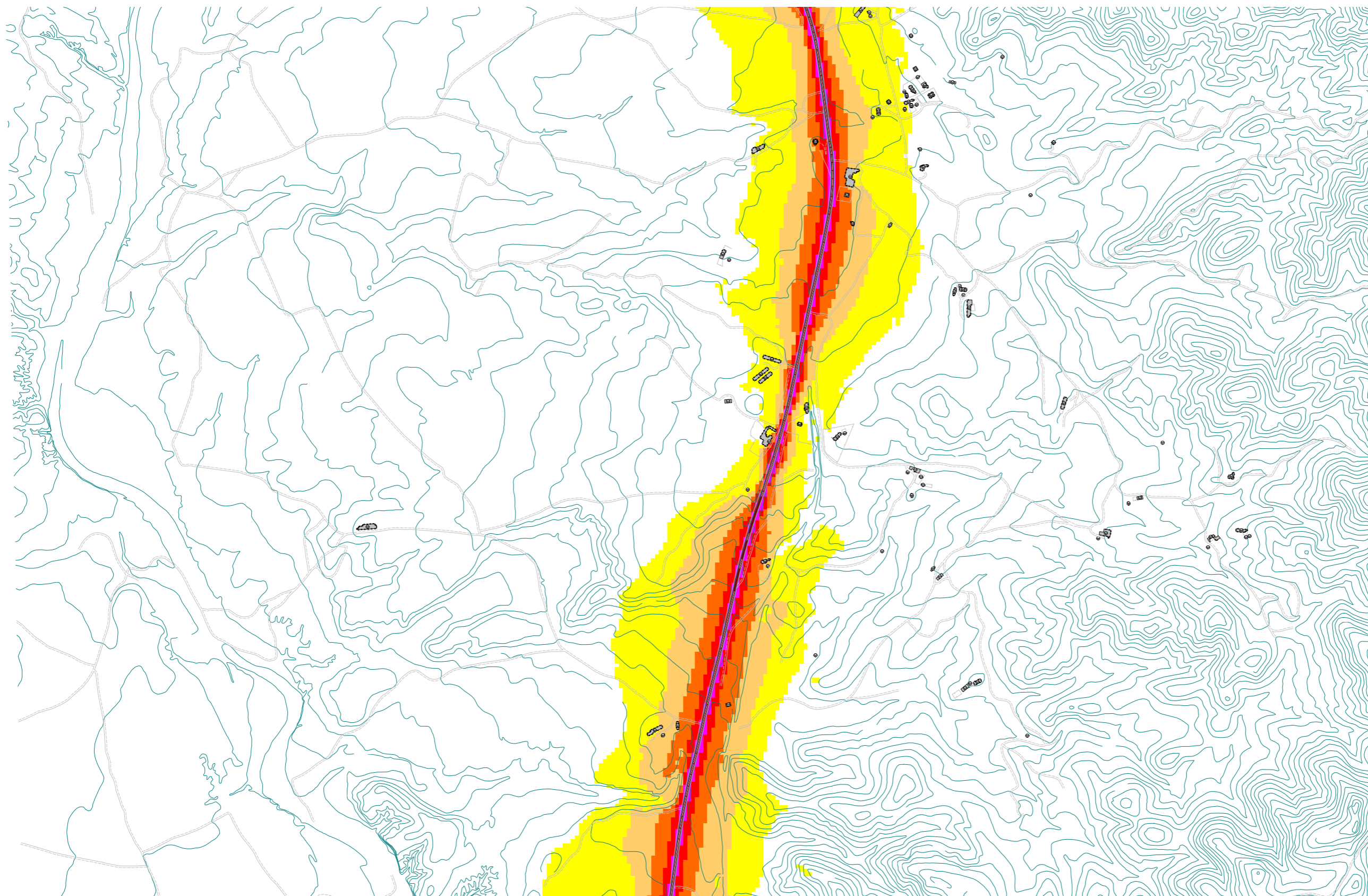
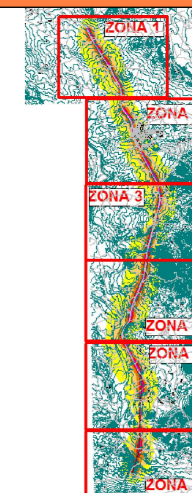
LEYENDA DE OBJETOS

-  Carretera
-  Edif. Industrial
-  Edif. Residencial
-  Curvas Nivel
-  Evaluación Edif.

NIVELES SONOROS

-  ... <= 55
-  55 < ... <= 60
-  60 < ... <= 65
-  65 < ... <= 70
-  70 < ... <= 75
-  75 < ...

CUADRÍCULA POSICIÓN



Mapa Estratégico de Ruido







DESCRIPCION DEL PLANO

Mapa de Nivel Sonoro
Carretera RM-3
Periodo tarde
Le (19:00-23:00)
Zona - 5
Altura Mapa 4m

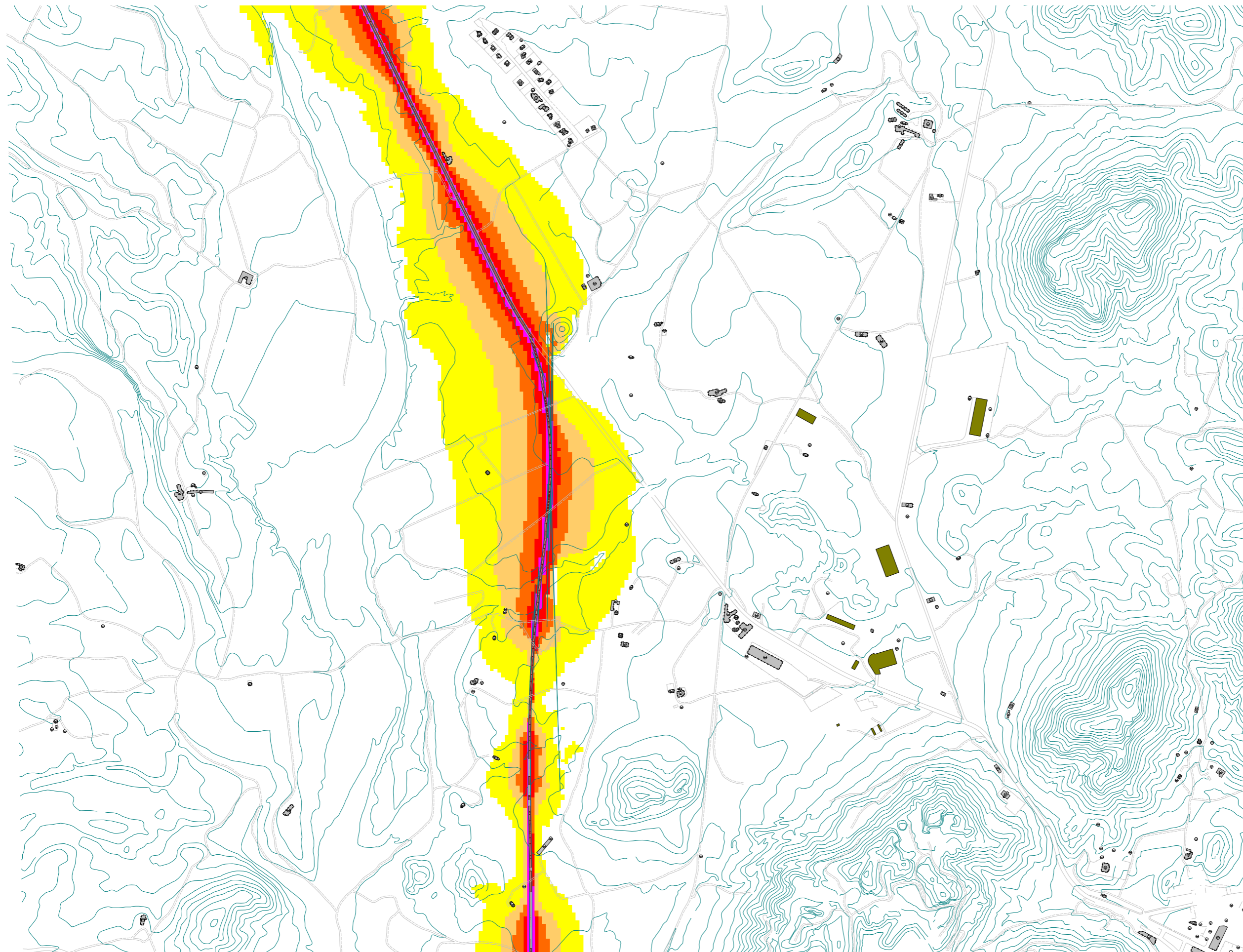
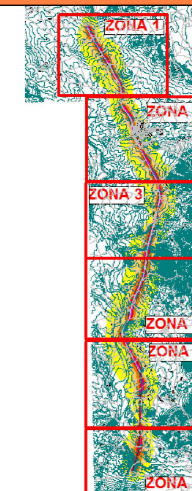
LEYENDA DE OBJETOS

-  Carretera
-  Edif. Industrial
-  Edif. Residencial
-  Curvas Nivel
-  Evaluación Edif.

NIVELES SONOROS

-  ... ≤ 55
-  $55 < \dots \leq 60$
-  $60 < \dots \leq 65$
-  $65 < \dots \leq 70$
-  $70 < \dots \leq 75$
-  $75 < \dots$

CUADRÍCULA POSICIÓN



Mapa Estratégico de Ruido

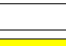





DESCRIPCION DEL PLANO

Mapa de Nivel Sonoro
Carretera RM-3
Periodo tarde
Le (19:00-23:00)
Zona - 6
Altura Mapa 4m

LEYENDA DE OBJETOS

-  Carretera
-  Edif. Industrial
-  Edif. Residencial
-  Curvas Nivel
-  Evaluación Edif.

NIVELES SONOROS

-  ... <= 55
-  55 < ... <= 60
-  60 < ... <= 65
-  65 < ... <= 70
-  70 < ... <= 75
-  75 < ...

CUADRÍCULA POSICIÓN

